

Ydao

MOQ

OEM / ODM

200



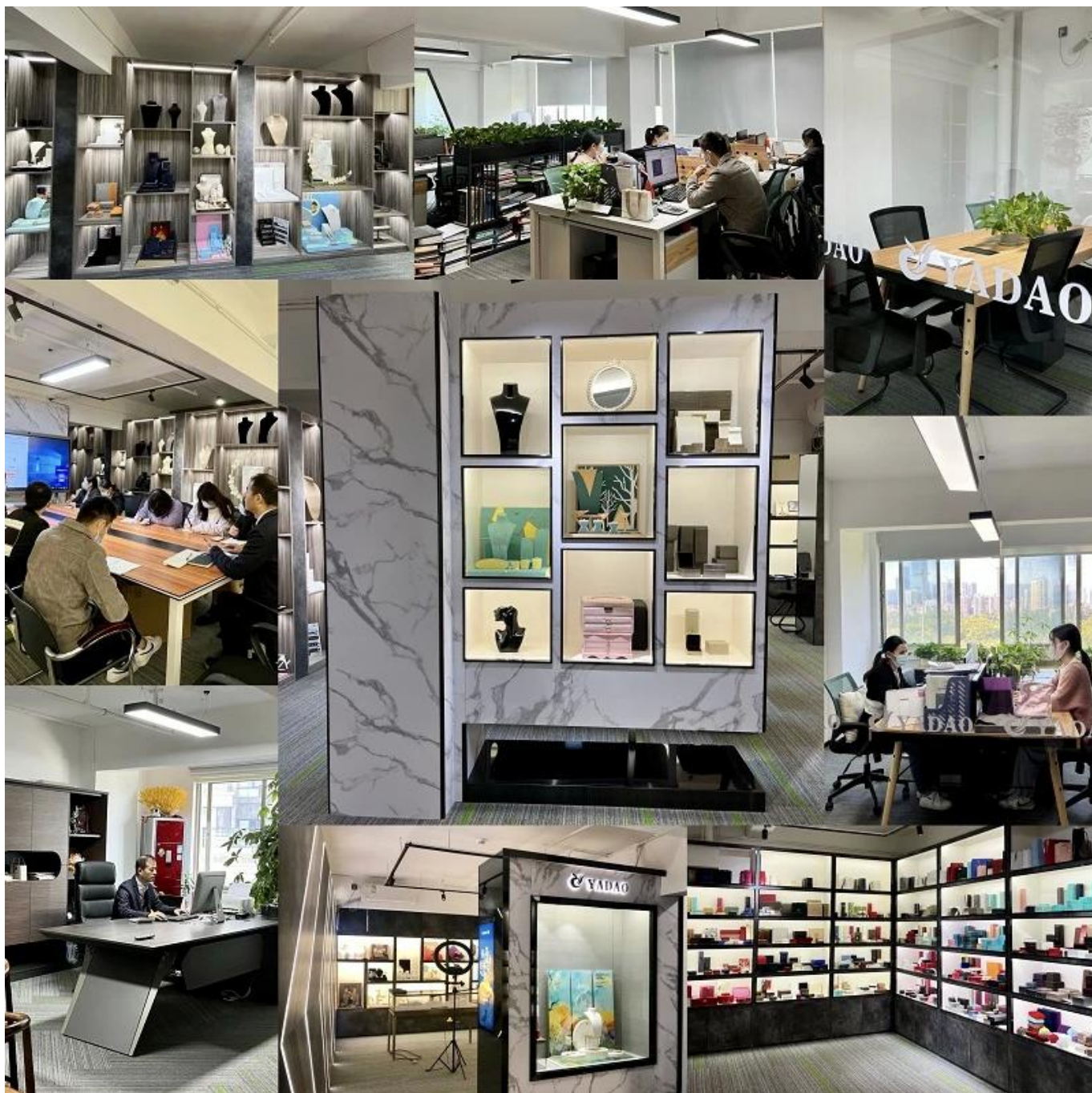


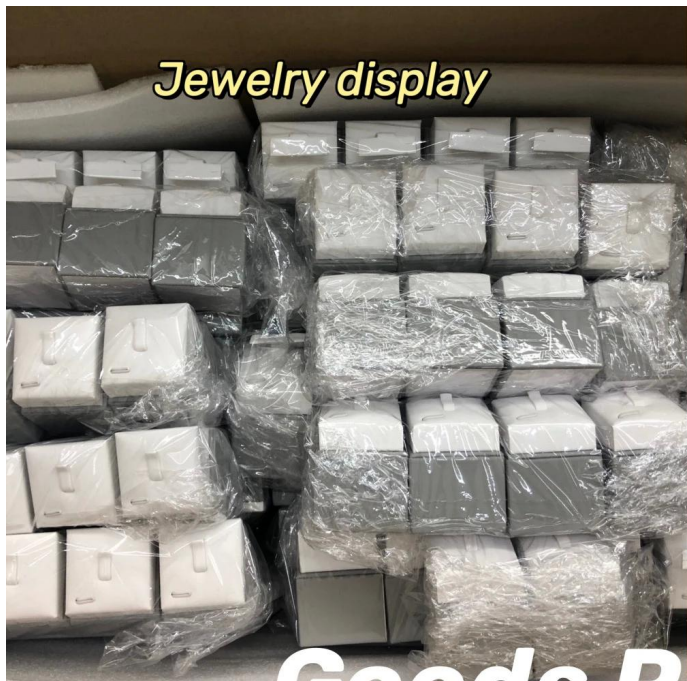






Yadao





Jewelry display



Paper bag

Goods Packaging



Jewelry box



Jewelry Pouch





Sun, 10 Jan

Hi ❤️ happy Late new year 🎉
Sorry for the late reply, thanks for your concern, I gave your number to my friends because they ask for the boxes.

And everything is perfect 🙌
Thanks again .

21:37

Mon, 11 Jan

thank you, happy late new year too 😊
I received the message from your friend thanks again ❤️

10:03 ✓

Hi
I received the goods in full, it is better than I expected 😊
thank you sooo much ❤️❤️

18:11

Mon, 30 Nov

wow, that's so great 😊

13:59 ✓

thanks for your loving

13:59 ✓

Bravo 🙌🙌🙌🙌

17:12

Supplier Service: Very Satisfied (5 stars) On-time Shipment: Very Satisfied (5 stars)

Make Up Velvet Button New Style Jewelry Pack...

★★★★★

These pouches were amazing. Just the perfect size for my jewellery. I love them. amazing quality, next I order I will have to make them a bit bigger.

hi dear, have you received the pouches?

Hello dear yes I did two days ago at last

15:19

Thank you 🙏

15:19

wow, that's great 😊

Are they all in well?

Yes they are good
I will probably need to reorder soon

15:22

Sun, 14 Mar

Hello, how are you? Everything was very well, thank you very much. I will tell you when I need more

07:36

Please send me a message on the Alibaba website where I can rate their products with 5 stars Thank you very much

07:37

Hiiii

15:15

Yes we are selling

15:15

Everyone LOVES the boxes

Supplier Service: Very Satisfied (5 stars) On-time Shipment: Very Satisfied (5 stars)

Custom Logo Luxury Envelope Button Drawstri...

★★★★★

The pouches are excellent quality. Nice and thick fabric. Shipping was reasonably quick as well. Will be purchasing again in the future.

Feedback from our clients ❤️





Question 1: What is the purpose of the study?

1. To investigate the effect of the intervention on the outcome.
2. To determine the feasibility of the intervention.
3. To assess the acceptability of the intervention.
4. To explore the barriers and facilitators to the intervention.
5. To identify the needs of the target population.

Question 2: What are the research objectives?

The study aims to explore the experiences of the participants and to identify the barriers and facilitators to the intervention. The study also aims to determine the feasibility of the intervention and to assess the acceptability of the intervention.

Question 3: What are the research questions?

1. What are the experiences of the participants?
2. What are the barriers and facilitators to the intervention?
3. What are the needs of the target population?
4. What are the barriers and facilitators to the intervention?
5. What are the barriers and facilitators to the intervention?
6. What are the barriers and facilitators to the intervention?